



**CITY OF O'FALLON, MISSOURI
PURCHASING DEPARTMENT**

**100 North Main Street
O'Fallon, MO 63366
T: (636) 379-5527**

BID NUMBER:	22-098	BID ISSUE DATE:	12/16/2022
BID DESCRIPTION:	WATER TREATMENT PLANT HVAC UPGRADES		
BID OPENING DATE:	01/03/2023	BID OPENING TIME:	3:00 P.M. CST

December 29, 2022

ADDENDUM #1

The purpose of this addendum is to answer questions received on or before 12/28/2022 at 12:00 PM central time and to notify all bidders of the following modifications to Contract Documents.

Questions:

1. Does the duct work have to be lined or wrapped?

Answer: Yes. The electrical room supply duct shall be lined, and the high service pump room supply duct shall be wrapped.

2. Does the high service pump room require heating?

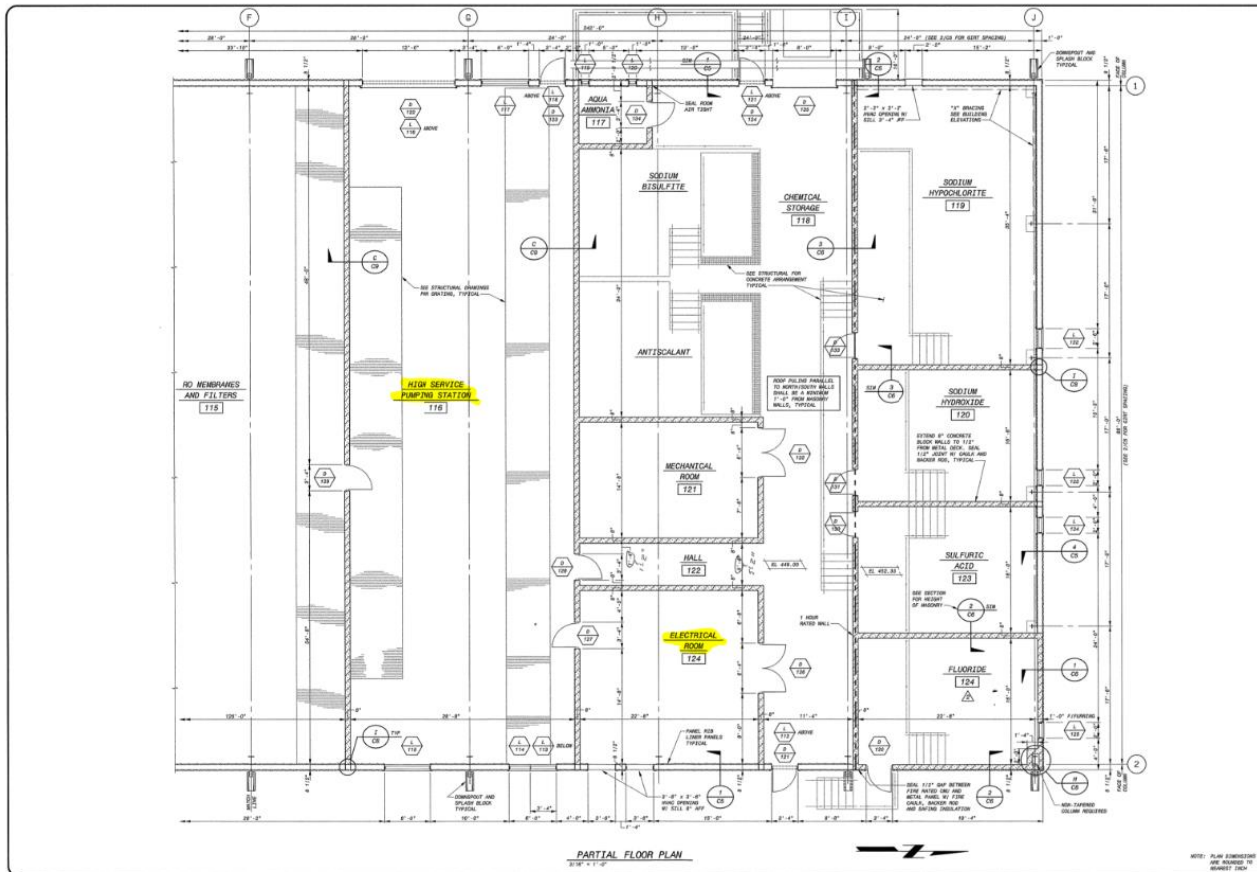
Answer: No There are existing hanging gas heaters in this space that are used to heat the room.

3. Do you want hot gas reheat for dehumidification on the high service pump room system?

Answer: The bidder may provide an alternative bid (as an addition to the requested bid) for providing a hot gas reheat system for the City's review and consideration.

4. Can drawings mechanical drawings of the water plant electrical and high service pump rooms be made available?

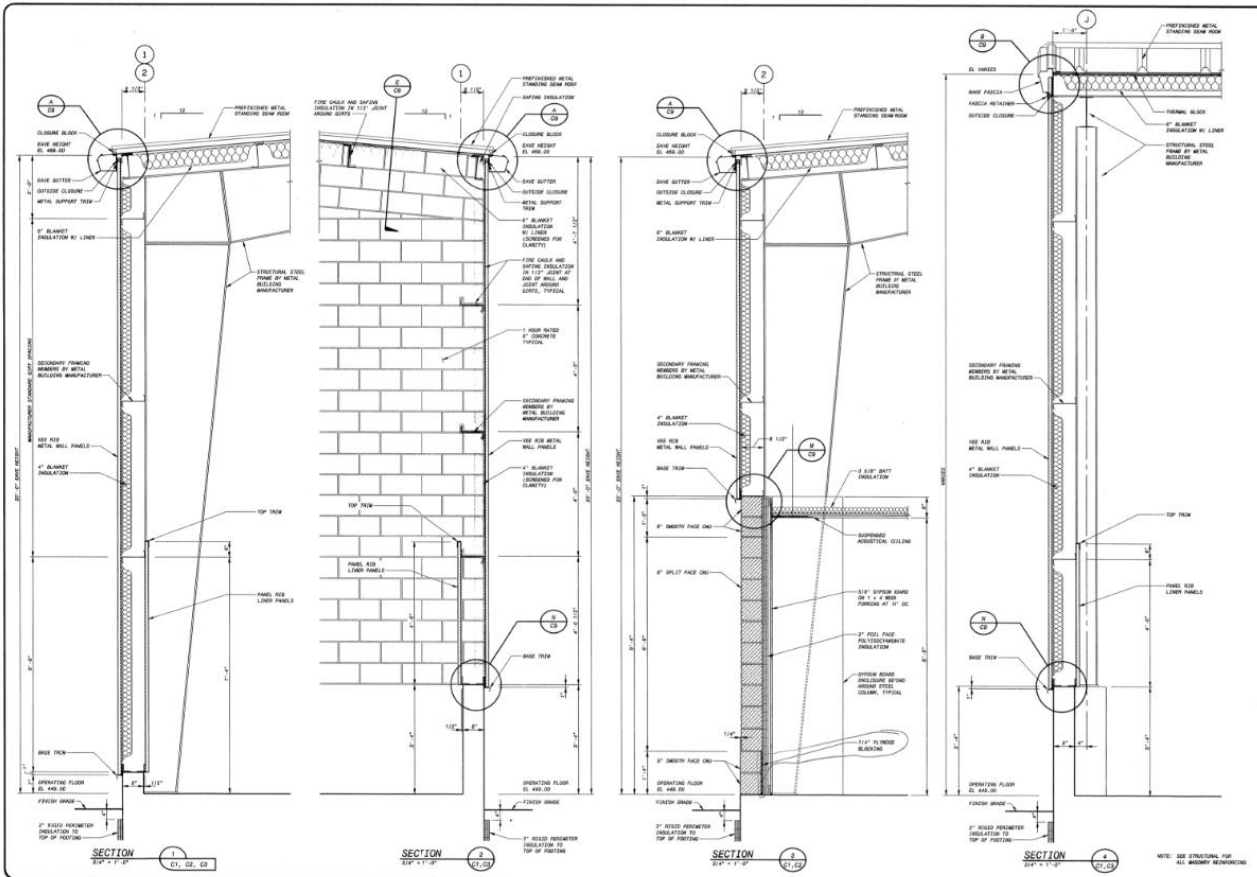
Answer: Yes. See attached pictures below.



PROJECT NO. 97515
SHEET NO. C3
OF 96

CITY OF O'FALLON, MISSOURI
 WATER TREATMENT PLANT
 ARCHITECTURAL
 PARTIAL FLOOR PLAN, COLUMNS F1/J

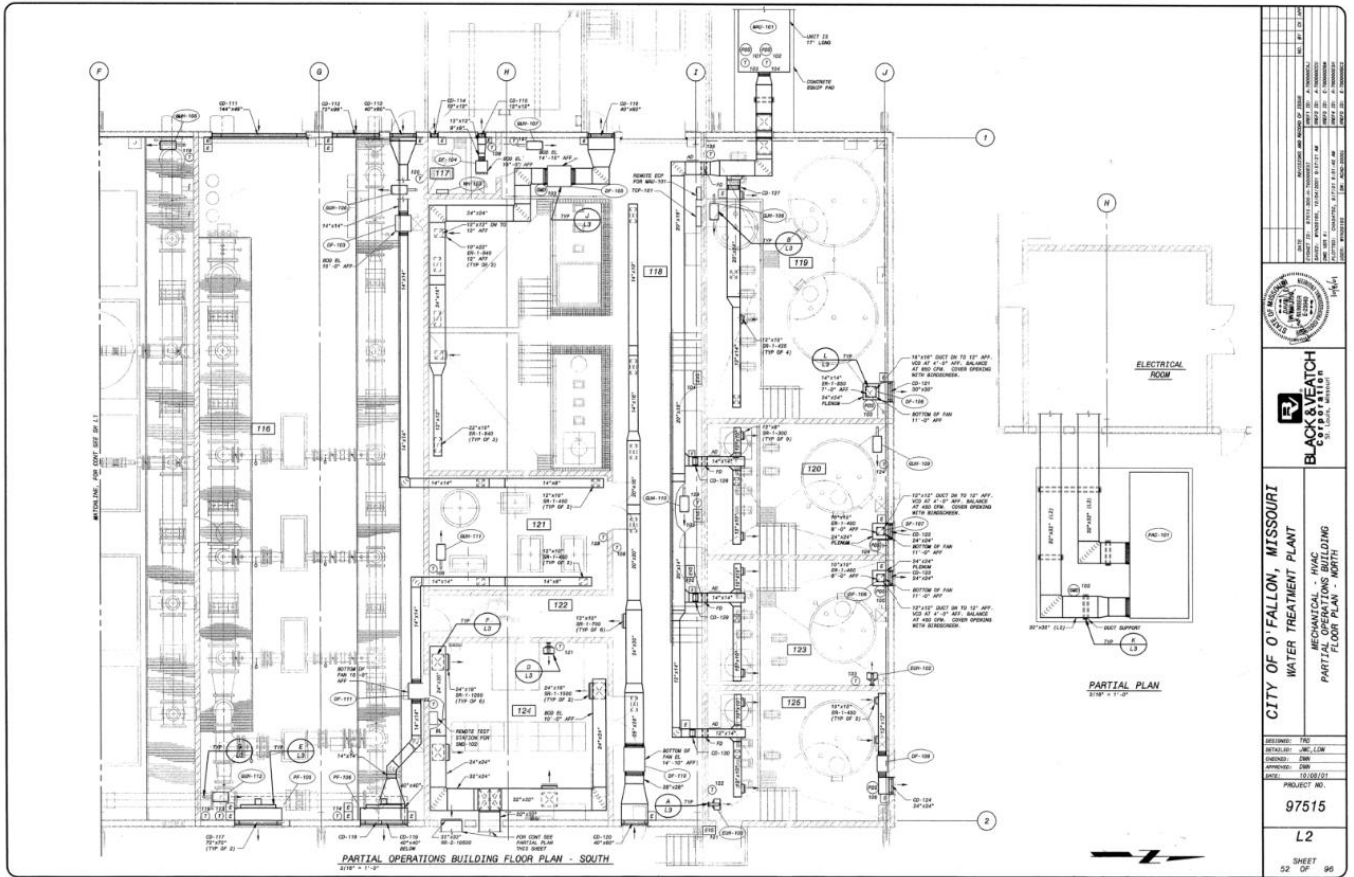
PREPARED BY: [Name]
 CHECKED BY: [Name]
 APPROVED BY: [Name]



PROJECT NO. 97515
SHEET NO. C5
OF 96

CITY OF O'FALLON, MISSOURI
 WATER TREATMENT PLANT
 ARCHITECTURAL
 WALL SECTIONS

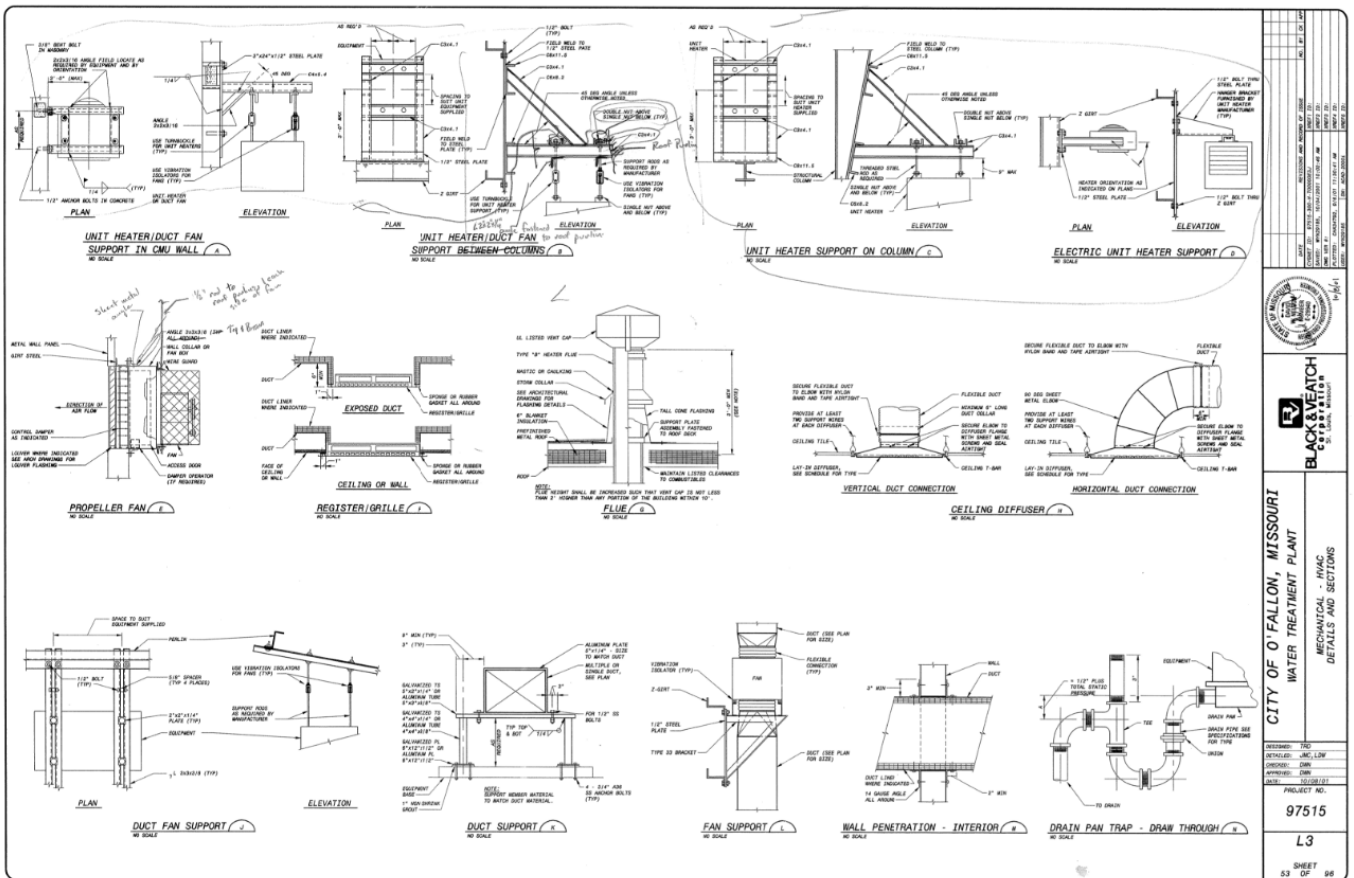
PREPARED BY: [Name]
 CHECKED BY: [Name]
 APPROVED BY: [Name]



DESIGNED BY	TRC
DRAWN BY	JAC, LHM
CHECKED BY	DMB
DATE	11/13/13
PROJECT NO.	97515
SHEET	L2
SHEET	52 OF 96

CITY OF O'FALLON, MISSOURI
WATER TREATMENT PLANT
MECHANICAL - HVAC
PARTIAL OPERATIONS BUILDING
FLOOR PLAN - NORTH

BLACK & VEATCH
 CORPORATION
 MECHANICAL ENGINEERS



DESIGNED BY	TRC
DRAWN BY	JAC, LHM
CHECKED BY	DMB
DATE	11/13/13
PROJECT NO.	97515
SHEET	L3
SHEET	53 OF 96

CITY OF O'FALLON, MISSOURI
WATER TREATMENT PLANT
MECHANICAL - HVAC
DETAILS AND SECTIONS

BLACK & VEATCH
 CORPORATION
 MECHANICAL ENGINEERS

UNIT NUMBER	LOCATION	HEATING TYPE	HEATING CAPACITY (BTU/H)	ESP (IN WG)	AIRFLOW (CFM)	POWER SUPPLY VOLTAGE	APPROX WEIGHT (LBS)	REMARKS
CD-101	RM 101	FC	4000	0.875	14	240V	400	15, 2, 3

UNIT NUMBER	LOCATION	HEATING TYPE	HEATING CAPACITY (BTU/H)	ESP (IN WG)	AIRFLOW (CFM)	POWER SUPPLY VOLTAGE	APPROX WEIGHT (LBS)	REMARKS
CD-102	RM 101	FC	4000	0.875	14	240V	400	15, 2, 3

UNIT NUMBER	LOCATION	HEATING TYPE	HEATING CAPACITY (BTU/H)	ESP (IN WG)	AIRFLOW (CFM)	POWER SUPPLY VOLTAGE	APPROX WEIGHT (LBS)	REMARKS
DP-101	RM 118	FC	4000	0.875	14	240V	400	15, 2, 3

UNIT NUMBER	LOCATION	HEATING TYPE	HEATING CAPACITY (BTU/H)	ESP (IN WG)	AIRFLOW (CFM)	POWER SUPPLY VOLTAGE	APPROX WEIGHT (LBS)	REMARKS
DP-102	RM 118	FC	4000	0.875	14	240V	400	15, 2, 3

UNIT NUMBER	LOCATION	HEATING TYPE	HEATING CAPACITY (BTU/H)	ESP (IN WG)	AIRFLOW (CFM)	POWER SUPPLY VOLTAGE	APPROX WEIGHT (LBS)	REMARKS
DP-103	RM 118	FC	4000	0.875	14	240V	400	15, 2, 3

UNIT NUMBER	LOCATION	HEATING TYPE	HEATING CAPACITY (BTU/H)	ESP (IN WG)	AIRFLOW (CFM)	POWER SUPPLY VOLTAGE	APPROX WEIGHT (LBS)	REMARKS
DP-104	RM 118	FC	4000	0.875	14	240V	400	15, 2, 3

UNIT NUMBER	LOCATION	HEATING TYPE	HEATING CAPACITY (BTU/H)	ESP (IN WG)	AIRFLOW (CFM)	POWER SUPPLY VOLTAGE	APPROX WEIGHT (LBS)	REMARKS
DP-105	RM 118	FC	4000	0.875	14	240V	400	15, 2, 3

UNIT NUMBER	LOCATION	HEATING TYPE	HEATING CAPACITY (BTU/H)	ESP (IN WG)	AIRFLOW (CFM)	POWER SUPPLY VOLTAGE	APPROX WEIGHT (LBS)	REMARKS
DP-106	RM 118	FC	4000	0.875	14	240V	400	15, 2, 3

UNIT NUMBER	LOCATION	HEATING TYPE	HEATING CAPACITY (BTU/H)	ESP (IN WG)	AIRFLOW (CFM)	POWER SUPPLY VOLTAGE	APPROX WEIGHT (LBS)	REMARKS
DP-107	RM 118	FC	4000	0.875	14	240V	400	15, 2, 3

UNIT NUMBER	LOCATION	HEATING TYPE	HEATING CAPACITY (BTU/H)	ESP (IN WG)	AIRFLOW (CFM)	POWER SUPPLY VOLTAGE	APPROX WEIGHT (LBS)	REMARKS
DP-108	RM 118	FC	4000	0.875	14	240V	400	15, 2, 3

UNIT NUMBER	LOCATION	HEATING TYPE	HEATING CAPACITY (BTU/H)	ESP (IN WG)	AIRFLOW (CFM)	POWER SUPPLY VOLTAGE	APPROX WEIGHT (LBS)	REMARKS
DP-109	RM 118	FC	4000	0.875	14	240V	400	15, 2, 3

UNIT NUMBER	LOCATION	HEATING TYPE	HEATING CAPACITY (BTU/H)	ESP (IN WG)	AIRFLOW (CFM)	POWER SUPPLY VOLTAGE	APPROX WEIGHT (LBS)	REMARKS
DP-110	RM 118	FC	4000	0.875	14	240V	400	15, 2, 3

UNIT NUMBER	LOCATION	HEATING TYPE	HEATING CAPACITY (BTU/H)	ESP (IN WG)	AIRFLOW (CFM)	POWER SUPPLY VOLTAGE	APPROX WEIGHT (LBS)	REMARKS
DP-111	RM 118	FC	4000	0.875	14	240V	400	15, 2, 3

UNIT NUMBER	LOCATION	HEATING TYPE	HEATING CAPACITY (BTU/H)	ESP (IN WG)	AIRFLOW (CFM)	POWER SUPPLY VOLTAGE	APPROX WEIGHT (LBS)	REMARKS
DP-112	RM 118	FC	4000	0.875	14	240V	400	15, 2, 3

UNIT NUMBER	LOCATION	HEATING TYPE	HEATING CAPACITY (BTU/H)	ESP (IN WG)	AIRFLOW (CFM)	POWER SUPPLY VOLTAGE	APPROX WEIGHT (LBS)	REMARKS
DP-113	RM 118	FC	4000	0.875	14	240V	400	15, 2, 3

UNIT NUMBER	LOCATION	HEATING TYPE	HEATING CAPACITY (BTU/H)	ESP (IN WG)	AIRFLOW (CFM)	POWER SUPPLY VOLTAGE	APPROX WEIGHT (LBS)	REMARKS
DP-114	RM 118	FC	4000	0.875	14	240V	400	15, 2, 3

UNIT NUMBER	LOCATION	HEATING TYPE	HEATING CAPACITY (BTU/H)	ESP (IN WG)	AIRFLOW (CFM)	POWER SUPPLY VOLTAGE	APPROX WEIGHT (LBS)	REMARKS
DP-115	RM 118	FC	4000	0.875	14	240V	400	15, 2, 3

UNIT NUMBER	LOCATION	HEATING TYPE	HEATING CAPACITY (BTU/H)	ESP (IN WG)	AIRFLOW (CFM)	POWER SUPPLY VOLTAGE	APPROX WEIGHT (LBS)	REMARKS
DP-116	RM 118	FC	4000	0.875	14	240V	400	15, 2, 3

UNIT NUMBER	LOCATION	HEATING TYPE	HEATING CAPACITY (BTU/H)	ESP (IN WG)	AIRFLOW (CFM)	POWER SUPPLY VOLTAGE	APPROX WEIGHT (LBS)	REMARKS
DP-117	RM 118	FC	4000	0.875	14	240V	400	15, 2, 3

UNIT NUMBER	LOCATION	HEATING TYPE	HEATING CAPACITY (BTU/H)	ESP (IN WG)	AIRFLOW (CFM)	POWER SUPPLY VOLTAGE	APPROX WEIGHT (LBS)	REMARKS
DP-118	RM 118	FC	4000	0.875	14	240V	400	15, 2, 3

CD-101 - 15, 2, 3
CD-102 - 15, 2, 3
DP-101 - 15, 2, 3
DP-102 - 15, 2, 3
DP-103 - 15, 2, 3
DP-104 - 15, 2, 3
DP-105 - 15, 2, 3
DP-106 - 15, 2, 3
DP-107 - 15, 2, 3
DP-108 - 15, 2, 3
DP-109 - 15, 2, 3
DP-110 - 15, 2, 3
DP-111 - 15, 2, 3
DP-112 - 15, 2, 3
DP-113 - 15, 2, 3
DP-114 - 15, 2, 3
DP-115 - 15, 2, 3
DP-116 - 15, 2, 3
DP-117 - 15, 2, 3
DP-118 - 15, 2, 3

DP-119 - 15, 2, 3
DP-120 - 15, 2, 3
DP-121 - 15, 2, 3
DP-122 - 15, 2, 3
DP-123 - 15, 2, 3
DP-124 - 15, 2, 3
DP-125 - 15, 2, 3
DP-126 - 15, 2, 3
DP-127 - 15, 2, 3
DP-128 - 15, 2, 3
DP-129 - 15, 2, 3
DP-130 - 15, 2, 3
DP-131 - 15, 2, 3
DP-132 - 15, 2, 3
DP-133 - 15, 2, 3
DP-134 - 15, 2, 3
DP-135 - 15, 2, 3
DP-136 - 15, 2, 3
DP-137 - 15, 2, 3
DP-138 - 15, 2, 3
DP-139 - 15, 2, 3
DP-140 - 15, 2, 3

CITY OF O'FALLON, MISSOURI
WATER TREATMENT PLANT
MECHANICAL - HVAC
SEQUENCE OF OPERATIONS

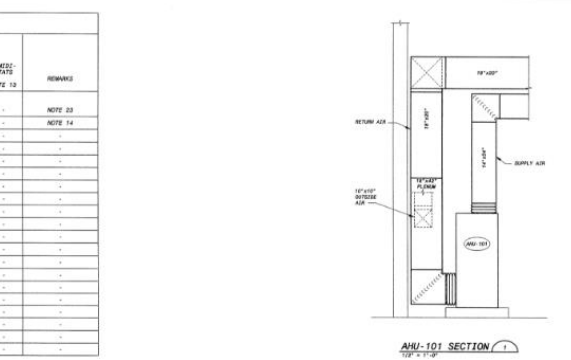
97515

L4

SHEET 54 OF 94

HVAC - SEQUENCE OF OPERATIONS

EQUIPMENT NUMBER	CONTROL TYPE	CONTROL TYPE	CONTROL TYPE	CONTROL TYPE	CONTROL TYPE	CONTROL TYPE	CONTROL TYPE	CONTROL TYPE	CONTROL TYPE	CONTROL TYPE	CONTROL TYPE	CONTROL TYPE	REMARKS
AHU-101	0-D-A	MCC	1-102	CD-100	-	-	-	-	-	-	-	-	NOTE 23
CD-101	0-D-A	MCC	1-102	CD-100	-	-	-	-	-	-	-	-	NOTE 23
DP-101	0-D-A	MCC	1-102	CD-100	-	-	-	-	-	-	-	-	NOTE 23



1. CONTROL SWITCH TYPE
2. CONTROL SWITCH LOCATION
3. AUTOMATIC CONTROL
4. CONTROL DAMPER INTERLOCKS
5. EMERGENCY VENTILATION SHUTOFF SWITCH INTERLOCK
6. SMOKE DETECTOR INTERLOCK
7. SMOKE DETECTOR INTERLOCK
8. SMOKE DETECTOR INTERLOCK
9. SMOKE DETECTOR INTERLOCK
10. THERMOSTATS - ROOM
11. THERMOSTATS - LOW TEMPERATURE
12. THERMOSTATS - SUPPLY
13. NOT USED
14. PACKAGED DRIP-AKES EXHAUSTION CONTROLS
15. NOT USED
16. NOT USED
17. NOT USED
18. NOT USED
19. NOT USED
20. HEATERS
21. TEMPERATURE AND EQUIPMENT CONTROL PANELS
22. PACKAGED AIR CONDITIONING SYSTEM WITH SEPARATE VOLUME AND FLOW CONTROLS
23. TEMPERATURE AND EQUIPMENT CONTROL PANELS SHALL BE PROVIDED WITH THE FOLLOWING FEATURES:
24. PACKAGED AIR CONDITIONING SYSTEM WITH SEPARATE VOLUME AND FLOW CONTROLS
25. THERMOSTAT SETTINGS
26. TEMPERATURE AND EQUIPMENT CONTROL PANELS SHALL BE PROVIDED WITH THE FOLLOWING FEATURES:
27. TEMPERATURE AND EQUIPMENT CONTROL PANELS SHALL BE PROVIDED WITH THE FOLLOWING FEATURES:
28. TEMPERATURE AND EQUIPMENT CONTROL PANELS SHALL BE PROVIDED WITH THE FOLLOWING FEATURES:
29. TEMPERATURE AND EQUIPMENT CONTROL PANELS SHALL BE PROVIDED WITH THE FOLLOWING FEATURES:
30. TEMPERATURE AND EQUIPMENT CONTROL PANELS SHALL BE PROVIDED WITH THE FOLLOWING FEATURES:
31. TEMPERATURE AND EQUIPMENT CONTROL PANELS SHALL BE PROVIDED WITH THE FOLLOWING FEATURES:
32. TEMPERATURE AND EQUIPMENT CONTROL PANELS SHALL BE PROVIDED WITH THE FOLLOWING FEATURES:
33. TEMPERATURE AND EQUIPMENT CONTROL PANELS SHALL BE PROVIDED WITH THE FOLLOWING FEATURES:
34. TEMPERATURE AND EQUIPMENT CONTROL PANELS SHALL BE PROVIDED WITH THE FOLLOWING FEATURES:
35. TEMPERATURE AND EQUIPMENT CONTROL PANELS SHALL BE PROVIDED WITH THE FOLLOWING FEATURES:
36. TEMPERATURE AND EQUIPMENT CONTROL PANELS SHALL BE PROVIDED WITH THE FOLLOWING FEATURES:
37. TEMPERATURE AND EQUIPMENT CONTROL PANELS SHALL BE PROVIDED WITH THE FOLLOWING FEATURES:
38. TEMPERATURE AND EQUIPMENT CONTROL PANELS SHALL BE PROVIDED WITH THE FOLLOWING FEATURES:
39. TEMPERATURE AND EQUIPMENT CONTROL PANELS SHALL BE PROVIDED WITH THE FOLLOWING FEATURES:
40. TEMPERATURE AND EQUIPMENT CONTROL PANELS SHALL BE PROVIDED WITH THE FOLLOWING FEATURES:

CITY OF O'FALLON, MISSOURI
WATER TREATMENT PLANT
MECHANICAL - HVAC
SEQUENCE OF OPERATIONS

97515

L5

SHEET 55 OF 94

Reminder:

The due date and time remains the same for this project. This is to remind all bidders that sealed bids for bid #22-098 – Water Treatment Plant HVAC Upgrades must be submitted by 3:00 P.M. CST, January 3, 2023 to:

Christine Grabin, Purchasing Agent
City of O'Fallon, Missouri
100 North Main Street
O'Fallon, Missouri 63366

Addendum information will be available over the Internet at www.ofallon.mo.us. We strongly suggest that you check for any addenda a minimum forty-eight hours (48) in advance of the bid deadline. Due to revisions, the bidders must acknowledge the Addendum(s) on the bid form.

END OF ADDENDUM #1